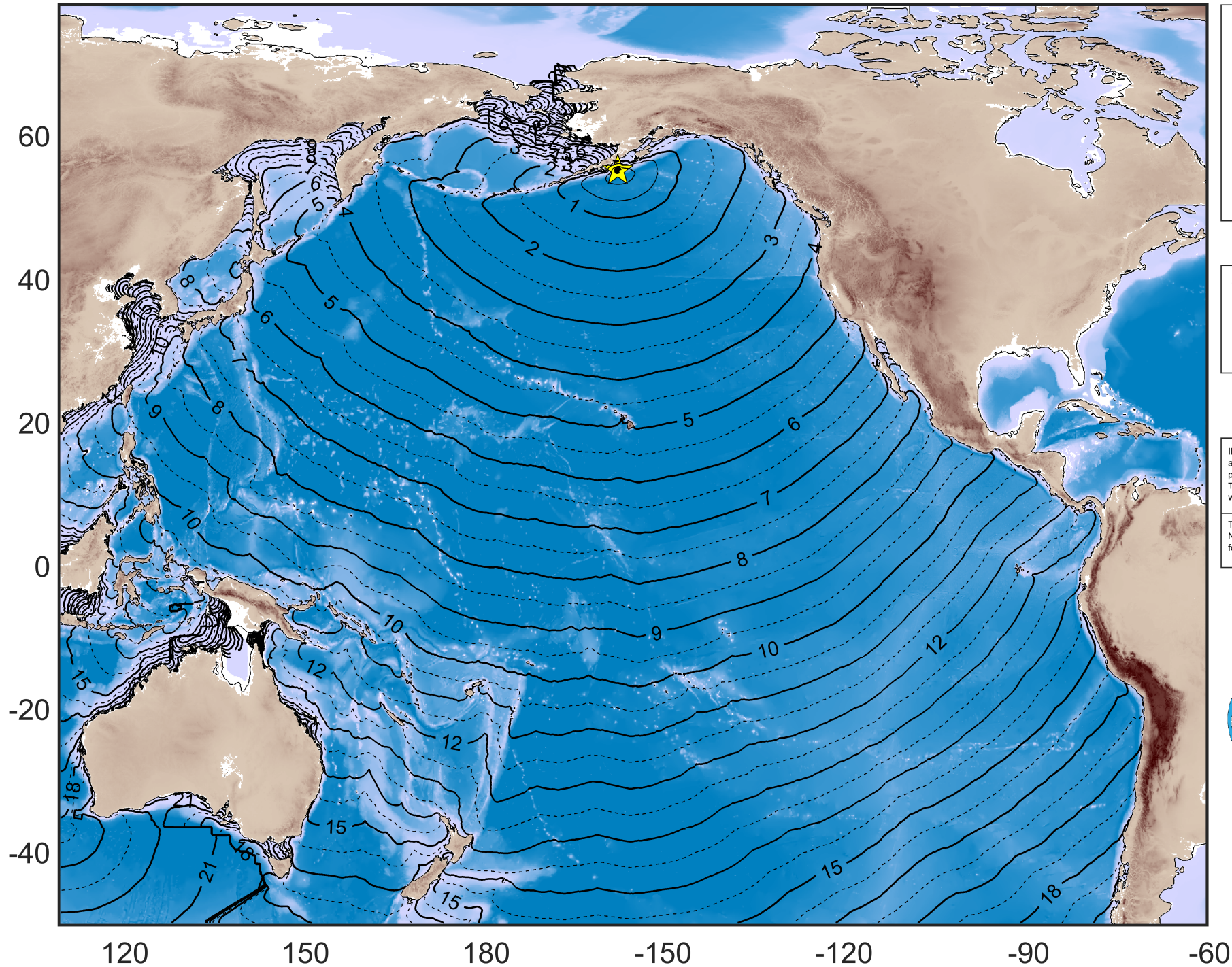


# Tsunami Travel Times Forecast



**ak021adyci6n**

EVENT TIME:

**2021-08-14 11:57**

LOCATION:

**136 km SE of Perryville, Alaska**

EPICENTER:

**(55° 5.07' N - 157° 32.38' W)**

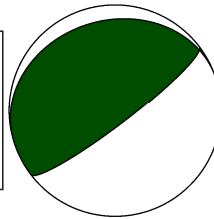
Mw: **6.9**

FOCAL DEPTH: **21.5 Km**

## LEGEND

★ Epicenter

▭ Fault area



IH-TSUSY (IH Tsunami Simulation System) is a tool developed at IH Cantabria which allows to carry out real time numerical propagation of tsunamis. The system provides forecast of travel time and maximum wave height along the affected areas.

Trigger parameters provided by U.S. Geological Survey (USGS). Numerical simulations performed with MIRONE (Luis J.F. 2007) for travel times and C3 (Olabarrieta et al., 2011) for wave heights.

