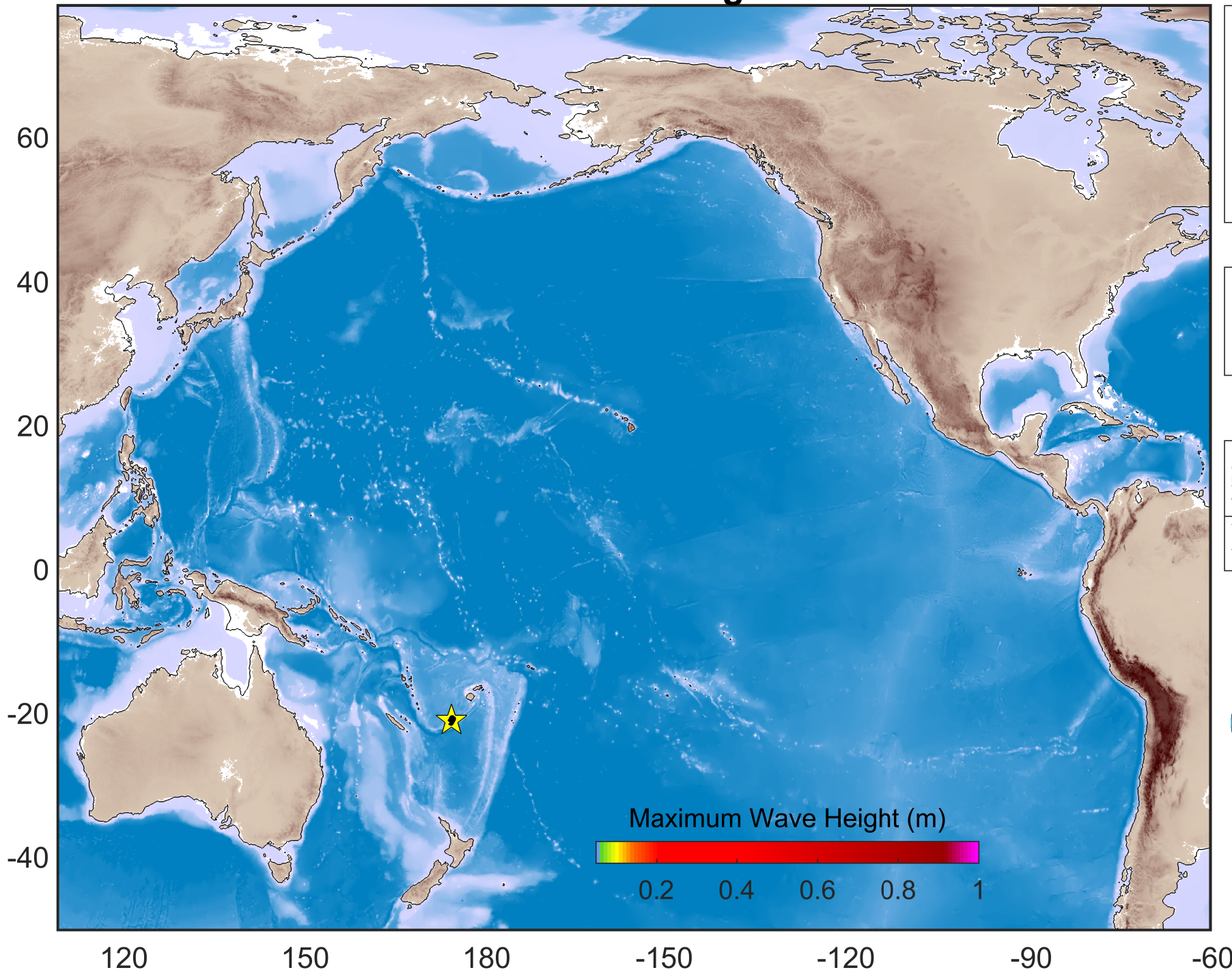


Tsunami Maximum Height Forecast

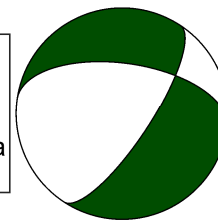


us6000fr0b
EVENT TIME:
2021-10-02 06:29
LOCATION:
Vanuatu region
EPICENTER:
(-22° 53.78' S - 174° 53.67' E)
Mw: 7.3
FOCAL DEPTH: **560.5 Km**

LEGEND

★ Epicenter

□ Fault area



IH-TSUSY (IH Tsunami Simulation System) is a tool developed at IH Cantabria which allows to carry out real time numerical propagation of tsunamis.
The system provides forecast of travel time and maximum wave height along the affected areas.

Trigger parameters provided by U.S. Geological Survey (USGS).
Numerical simulations performed with MIRONÉ (Luis J.F. 2007) for travel times and C3 (Olabarrieta et al., 2011) for wave heights.

