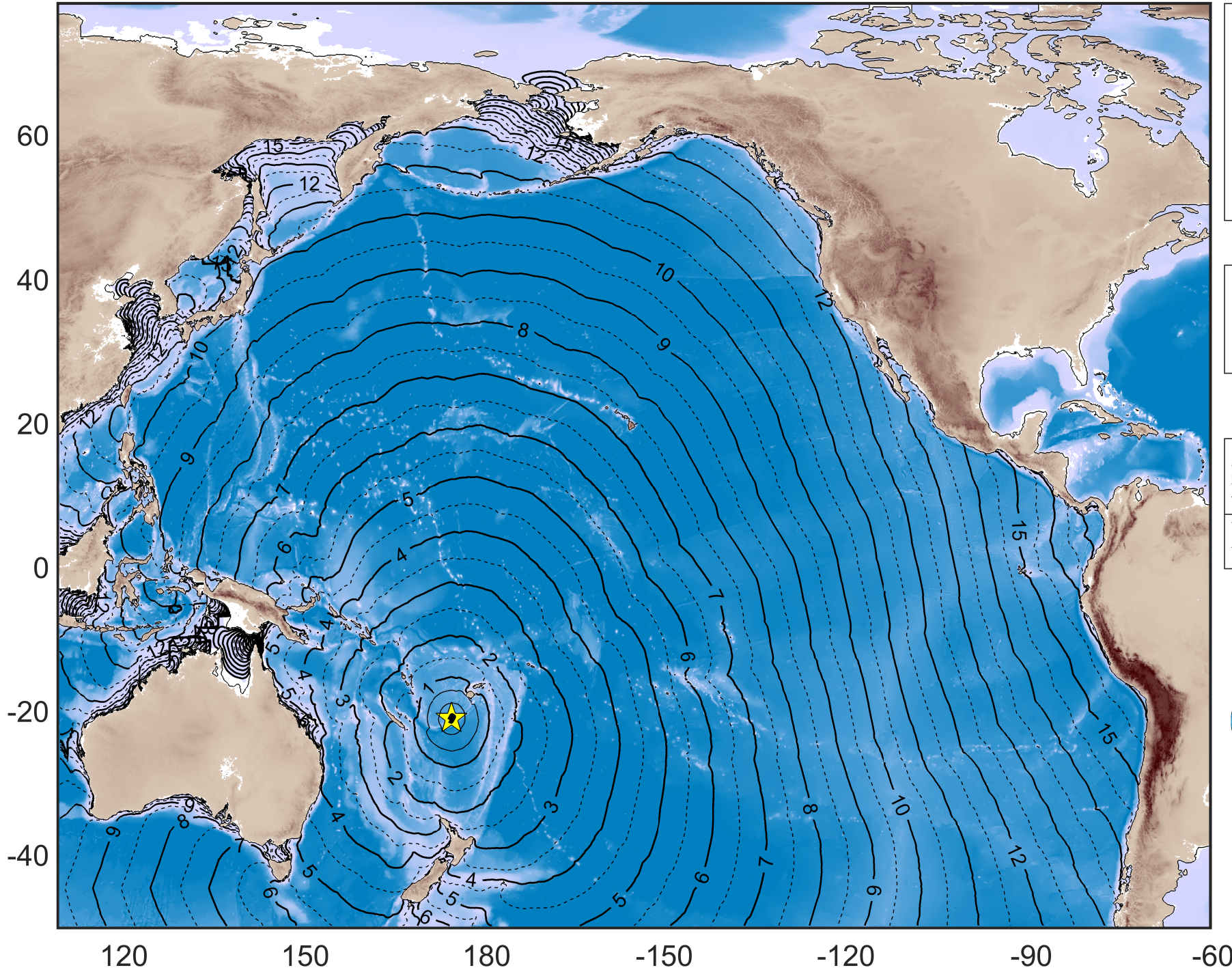


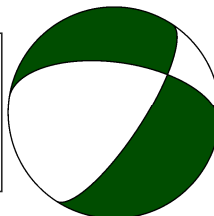
Tsunami Travel Times Forecast



us6000fr0b
EVENT TIME:
2021-10-02 06:29
LOCATION:
Vanuatu region
EPICENTER:
(-22° 53.78' S - 174° 53.67' E)
Mw: 7.3
FOCAL DEPTH: **560.5 Km**

LEGEND

- ★ Epicenter
- Fault area



IH-TSUSY (IH Tsunami Simulation System) is a tool developed at IHCantabria which allows to carry out real time numerical propagation of tsunamis.
The system provides forecast of travel time and maximum wave height along the affected areas.

Trigger parameters provided by U.S. Geological Survey (USGS).
Numerical simulations performed with MIRONE (Luis J.F. 2007)
for travel times and C3 (Olabarrieta et al., 2011) for wave heights.



IHTSUSY



IHCantabria
INSTITUTO DE HIDRÁULICA AMBIENTAL
UNIVERSIDAD DE CANTABRIA